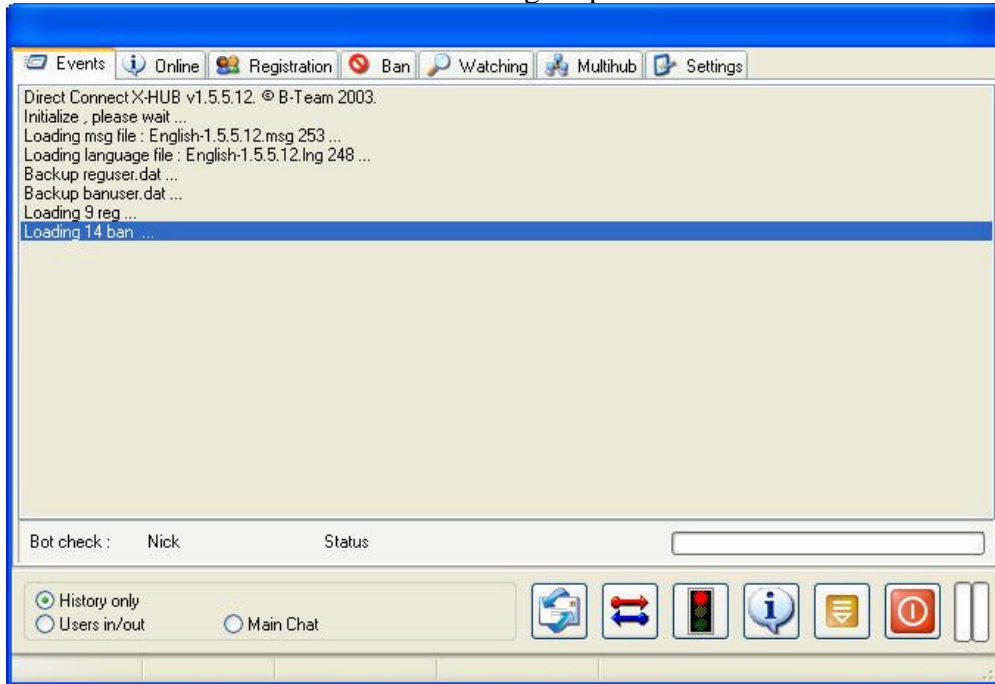


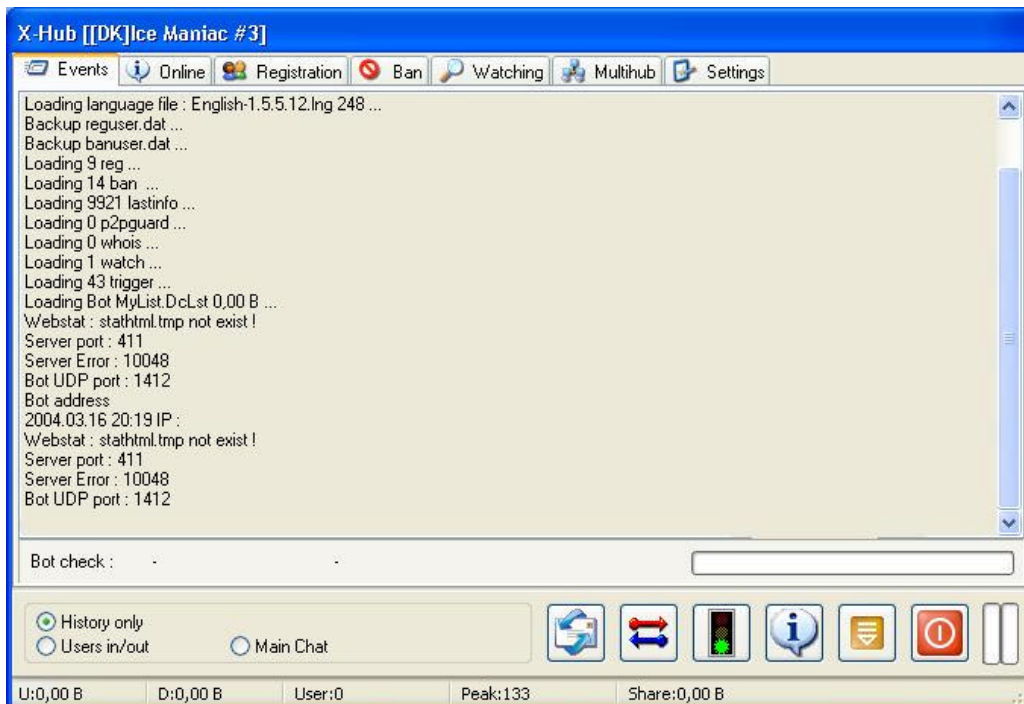
X-Hub 1.5.5.12

Welcome to this small Guide to help you start using X-Hub. I will try guide you to text and Picture and I so sorry about my bad English, but I hope it's help anyway

Start up your X-hub and it will start do alots of thing. A picture like this will shows

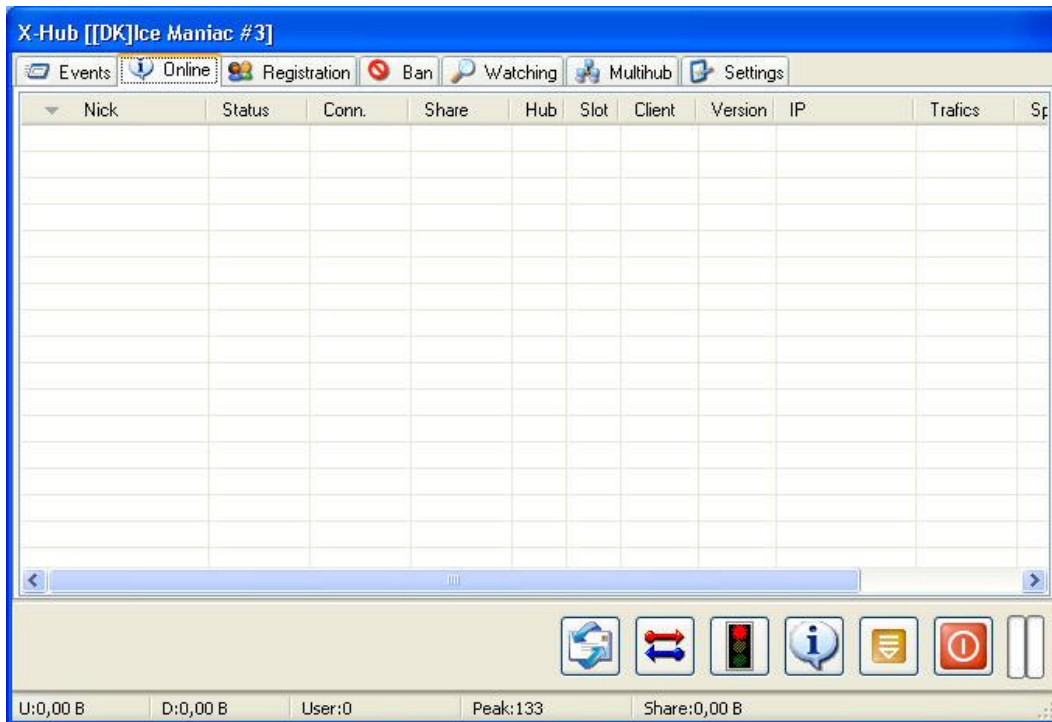


Maybe Your X-Hub minimize to Taskbar, in that case, open it again and the small green button light On.

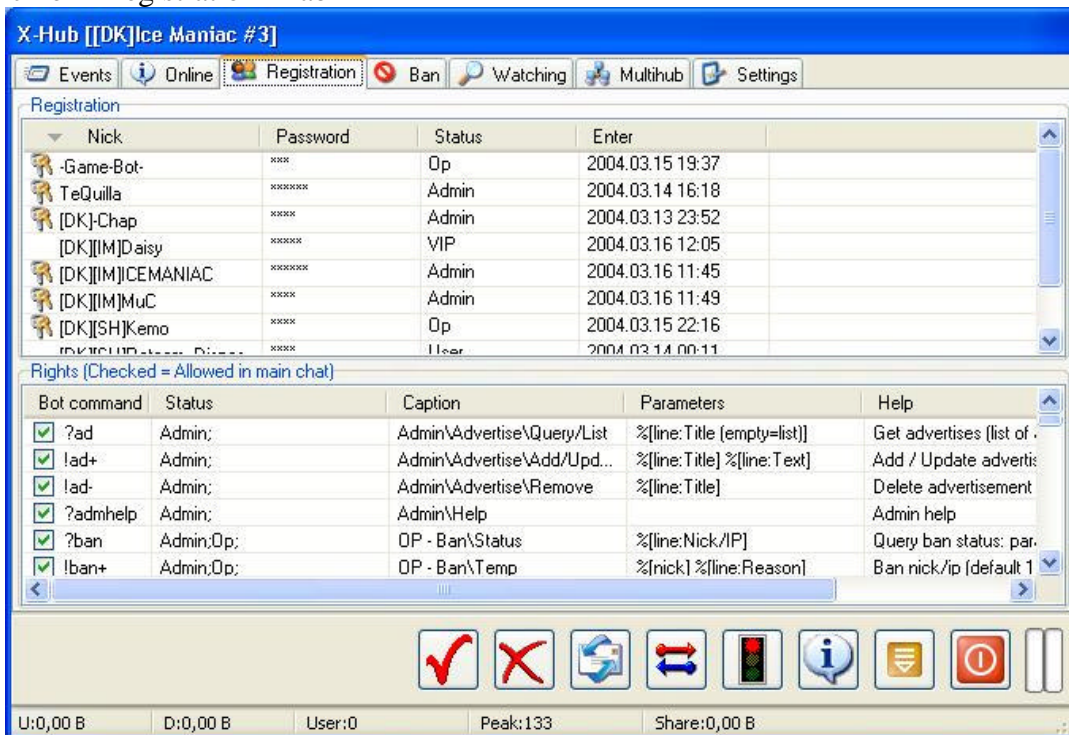


Draw your mouse pointer over the button on X-hub and some help text will be showing (if it's not English go to page 9

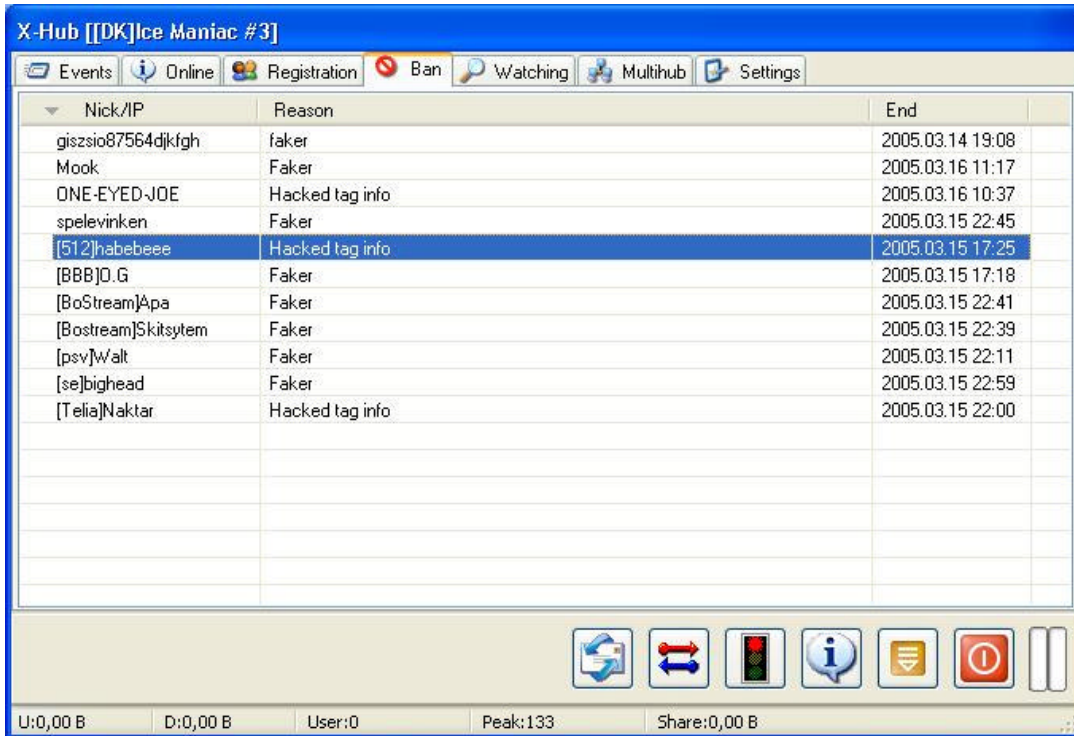
Now click on “Online” tabs and you will be able to see who is online. Right click and choose “Refresh”.



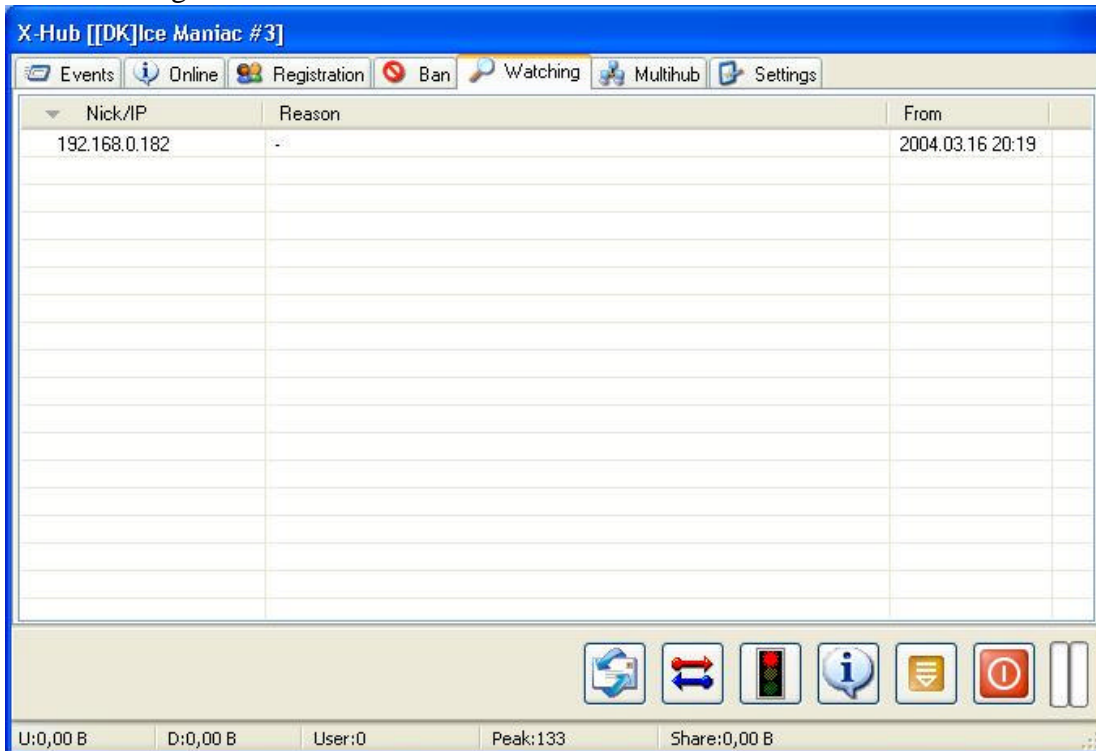
Now Click on “Registration” Tab



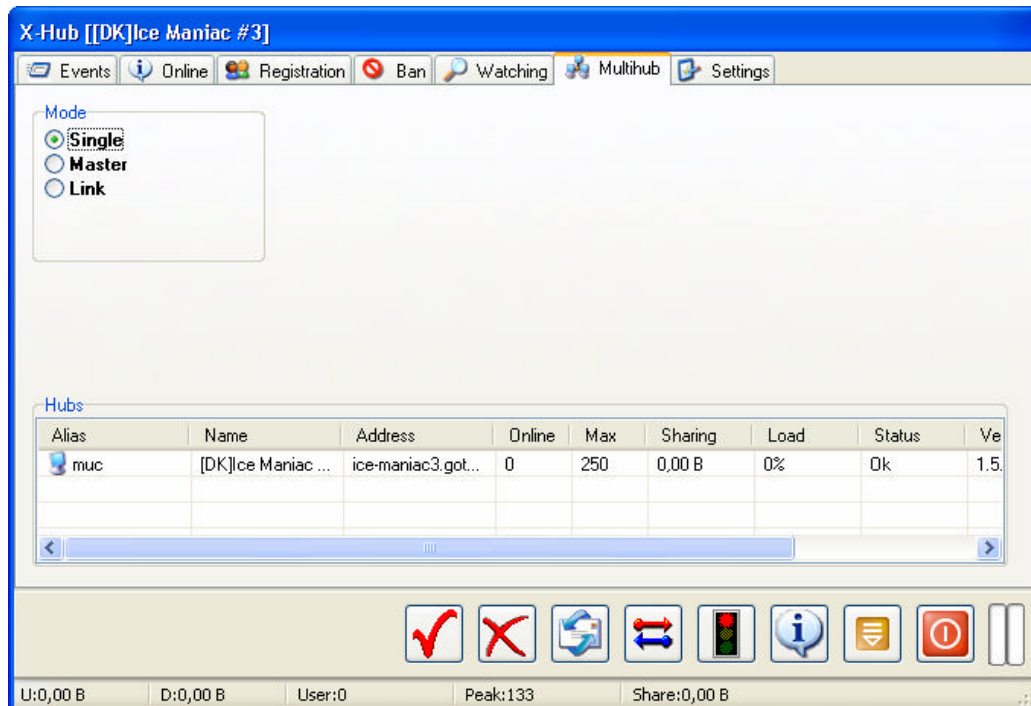
Right click in “Registration” windows and choose “new” to add your own Operators
 Right click on “Bot commands” windows will let you choose Who can do what
 Now let’s go to the next Tab “Ban”



Here you got all the Banned users. If you want to unban someone Right click on hes name and choose "Delete"
 Lets go to "Watching"



If you got some IP you want to Follow or Watching, add it here. Right click and Choose "New"
 The Next Tab is "Multihub" It's a tools if you got 2 or more hubs and all want to put them together.
 Let's say You got 2 hubs. The firt hub got 100 users and the second hub got 100 users. If you now use MultiHub, you will see ALL users on your hub. Hub 1 shows 200 users and the same did Hub 2. 200 users and you can even download, kick, and search on them all.



Settings on Master hub:

- On Multihub tab fleck on master ,
- On registration tab right clikk to the list , add new , Nick = Linkhub alias name , password optional , Status=link .

Settings on Linkhub:

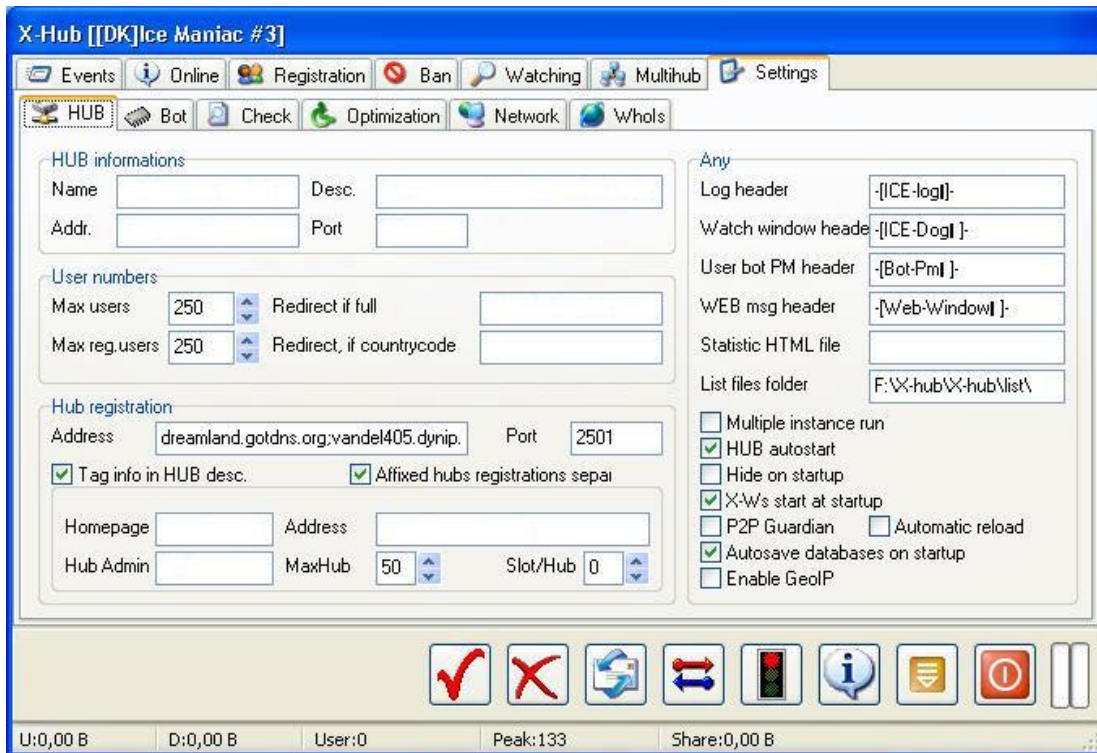
- On Multihub tab fleck on Link,
- Master connection address for Masterhub ,port,alias,password : nickname,password for linkhub on the Masterhub with link status .

After settings SAVE button , hub off/on ... (you can't switch mode when running!!).

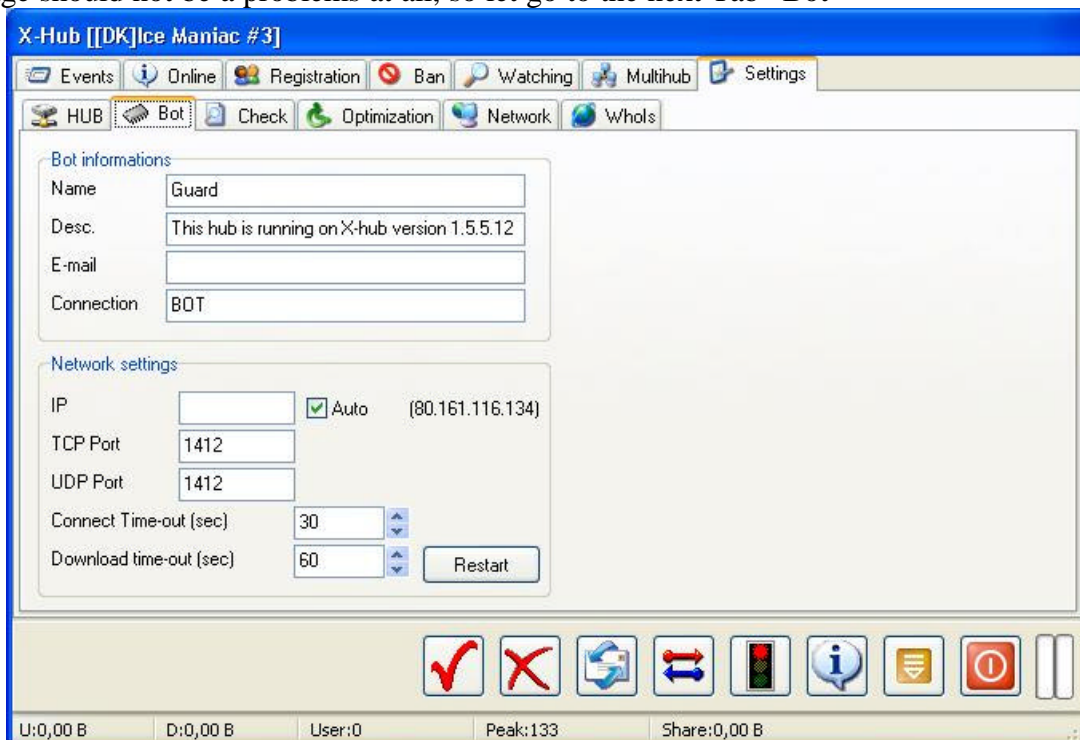
If master and link connection successfull, then on Multihub tab link hubs datas is showing in the list.

This datas refreshing every minutes

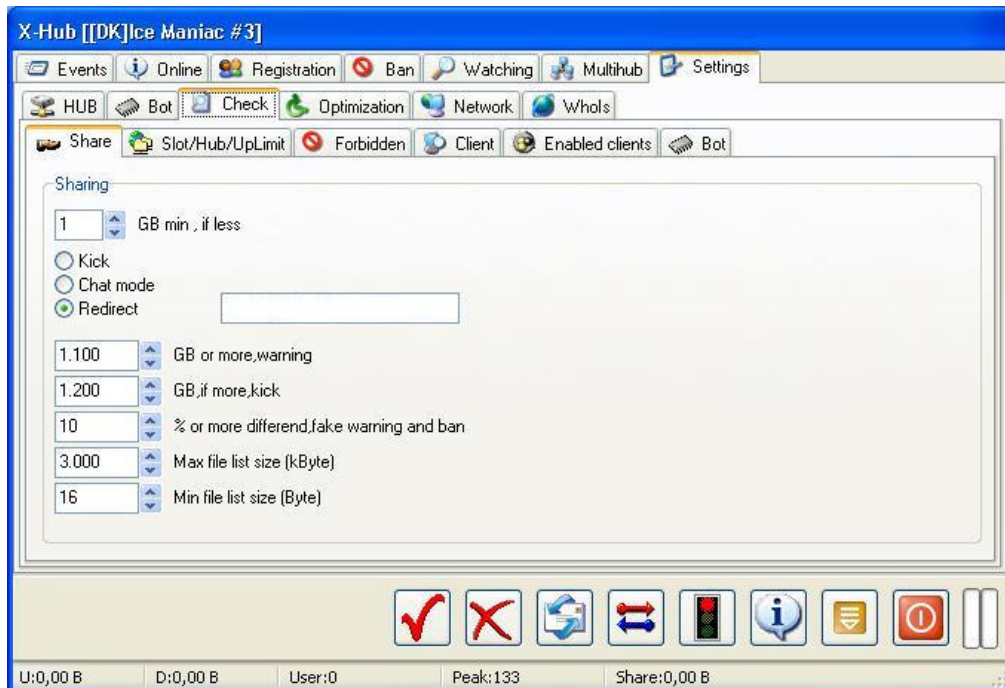
Now let go to the standard Settings



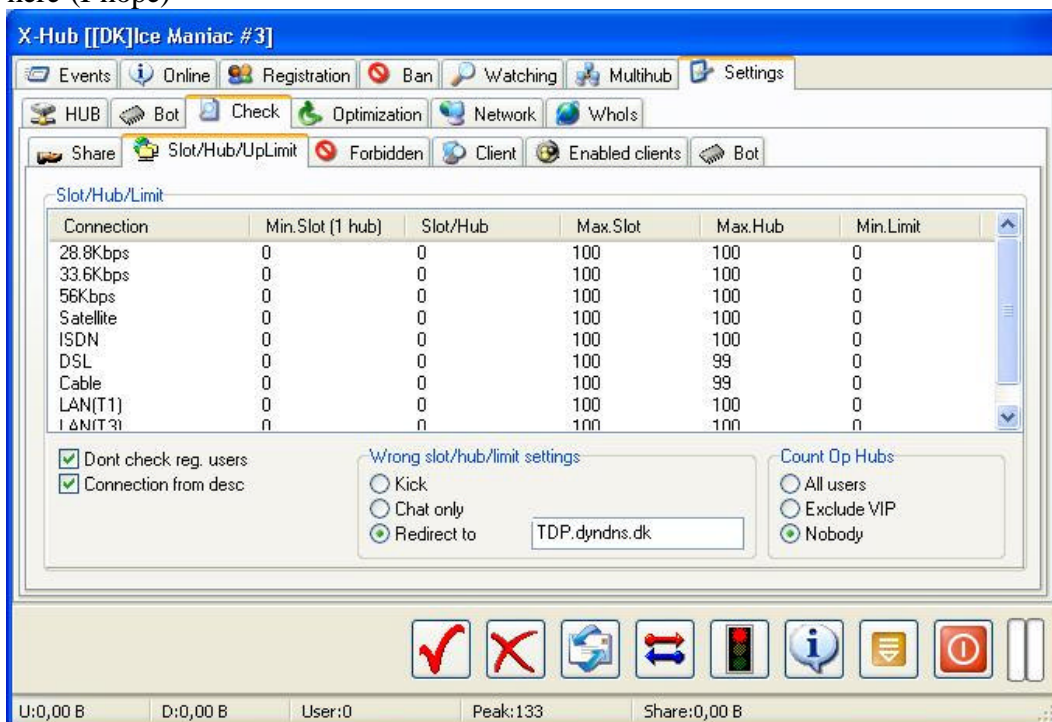
This page should not be a problems at all, so let go to the next Tab “Bot”



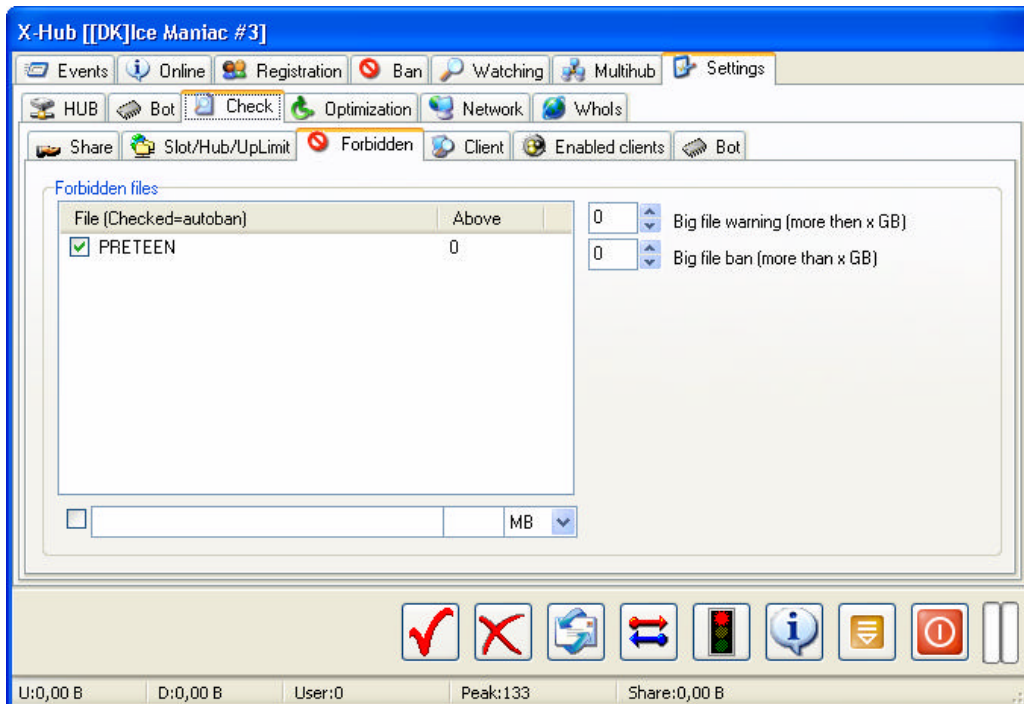
Fill your Bot informations. !Notice! you can only use One bot, and it works like normal not AND OP-Chat at the same time, if you enable the functions.



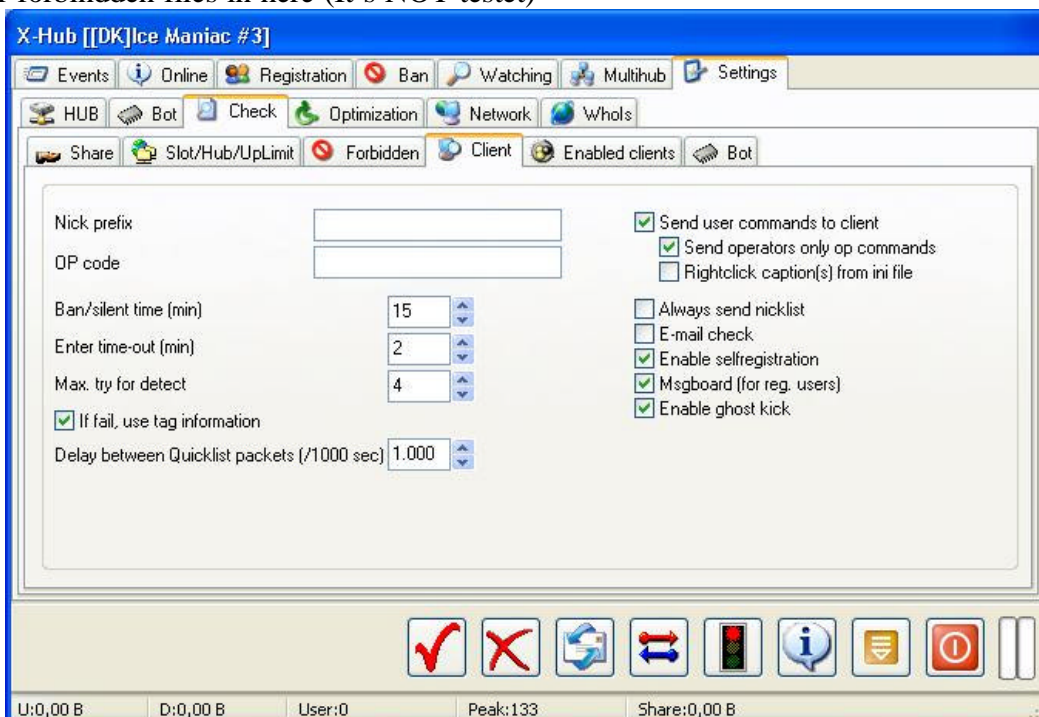
Now it's time to setup the Rules. Lets just jump throw the next picture, it's a easy part and no help are need here (I hope)



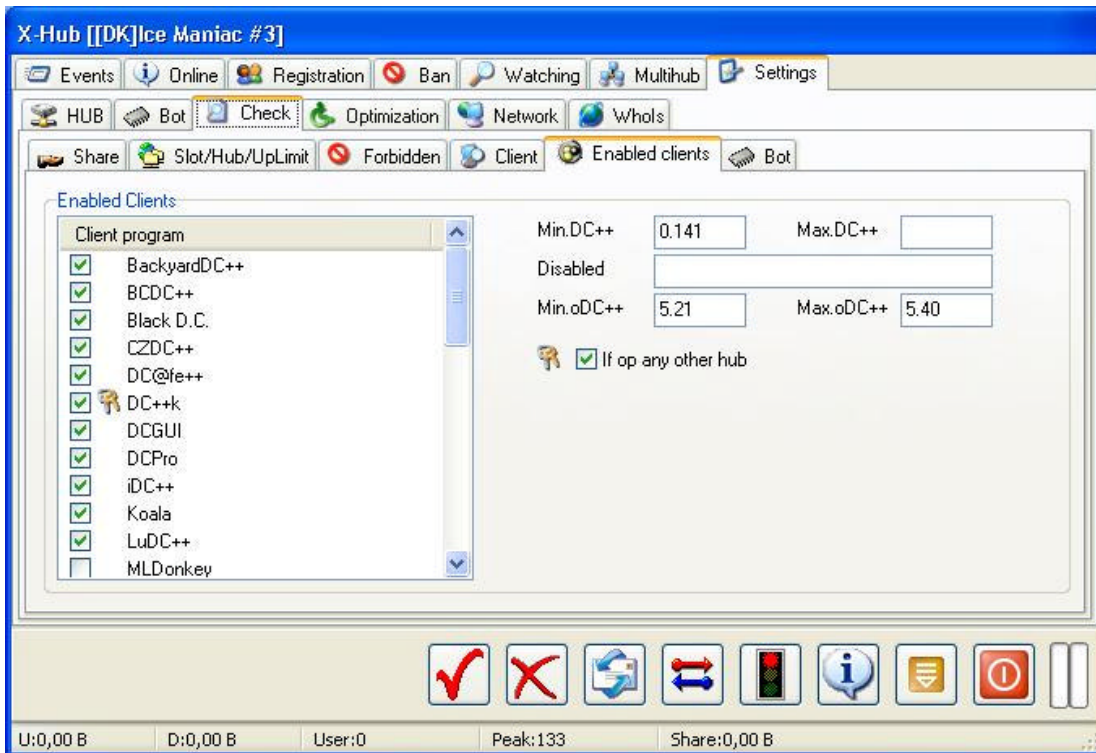
Slots and Hub and Upload Limit Rules here



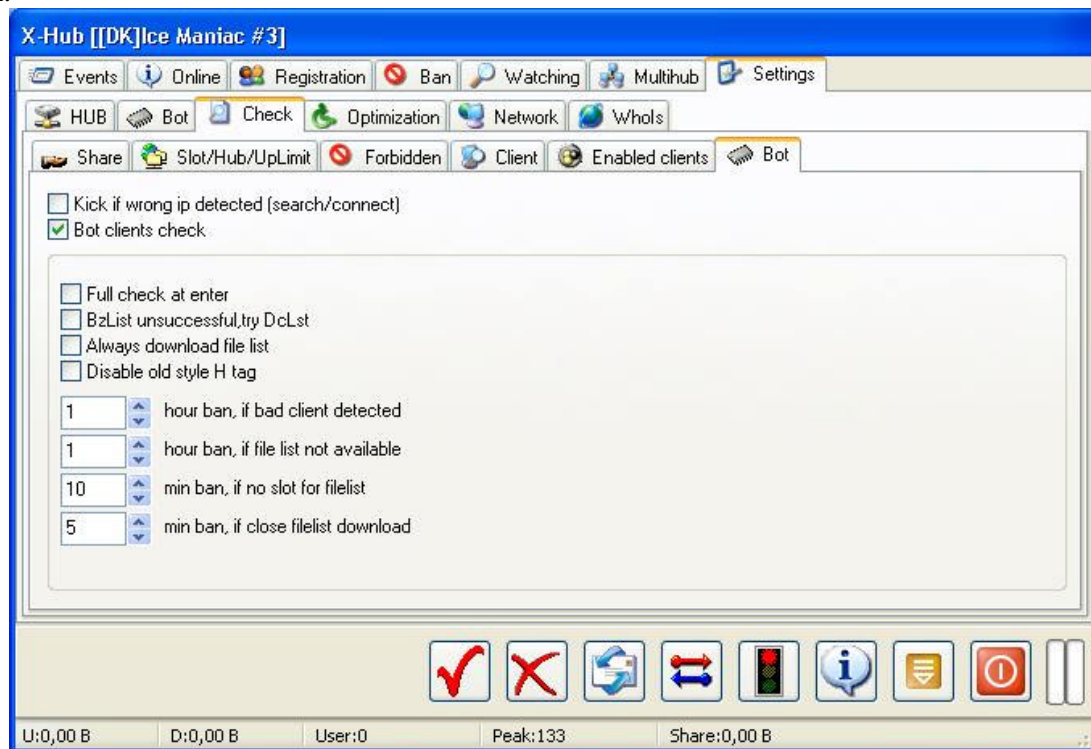
Add your forbidden files in here (It's NOT testet)



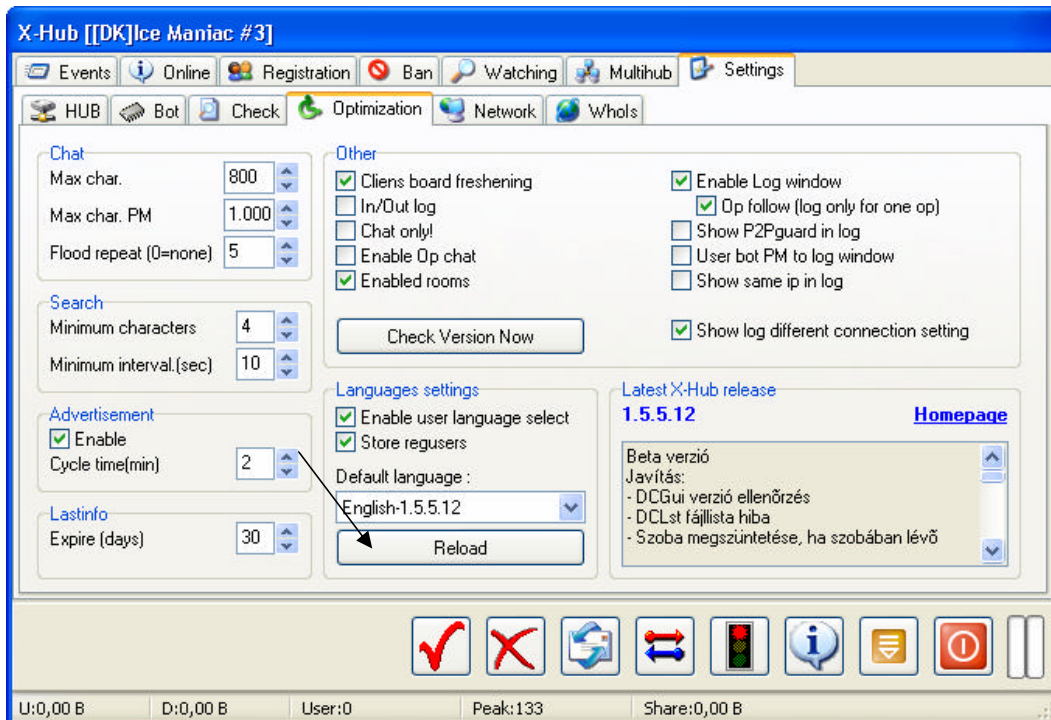
OP Code is a options to let your Operator type in the right code when they entering the Hub. Click on "rightclick captions(s) from ini file" and all Operator commands will be added to your mouse in the hub



Here is the rules about all Client. Mark them if you allow them in your hub. Set min and max version.



Here is what you want your Hub Bot to do when entering the hub. Harder rules makes slower hubs :o)



Here is the Flood rules, search rules options. It's speak for it self BUT over the bottom (see the arrow) get the English files and press the Button and ALL will now be on English.

The next 2 Tabs don't need any comment right now, this manual is just a HELP for beginners and not a complete Manual.

Any comment to this book can be sent to us at x-hub@icemaniac.dk and we do NOT answer any question, course you can get help by clicking the [Homepage](#) in X-Hub. The email is only if you want us to know something we need in this book.

Thanks for using this Help Guide for X-Hub 1.5.5.12

Muc Co Owner of [DK]Ice Maniac Hub Team DK Division on Magmar Network